

# TYPES OF SELECTION

In Edit Mode

## VERTEX SELECT MODE



Hotkey:  
Function:  
Select mode:

1  
SELECT VERTICES  
NOT APPLICABLE

## EDGE SELECT MODE



Hotkey:  
Function:  
Select mode:

2  
SELECT EDGES  
NOT APPLICABLE

## FACE SELECT MODE



Hotkey:  
Function:  
Select mode:

3  
SELECT FACES  
NOT APPLICABLE

## SELECT MULTIPLE



Hotkey:  
Function:  
Select mode:

SHIFT + LEFT CLICK  
SELECT MORE AT ONCE  
ALL

# TYPES OF SELECTION

In Edit Mode

## CIRCLE SELECT MODE



Hotkey:

Function:

Select mode:

**C**  
**SELECT WITH A CIRCLE**  
**ALL**

## X-RAY



Hotkey:

Function:

Select mode:

**ALT + Z**  
**SELECT THROUGH OBJECT**  
**ALL**

## SELECT ALL



Hotkey:

Function:

Select mode:

**A**  
**SELECT EVERYTHING**  
**ALL**

## SELECT NONE



Hotkey:

Function:

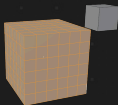
Select mode:

**ALT + A**  
**DESELECT EVERYTHING**  
**ALL**

# TYPES OF SELECTION

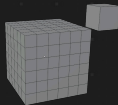
In Edit Mode

## SELECT LINKED



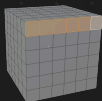
Hotkey: **L**  
Function: **SELECT CONNECTED MESH**  
Select mode: **ALL**

## DESELECT LINKED



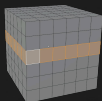
Hotkey: **SHIFT + L**  
Function: **DESELECT CONNECTED**  
Select mode: **ALL**

## SELECT SHORTEST PATH



Hotkey: **CTRL + LEFT CLICK**  
Function: **SELECT IN A ROW**  
Select mode: **ALL**

## SELECT LOOP

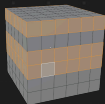


Hotkey: **ALT + LEFT CLICK**  
Function: **SELECT A LOOP**  
Select mode: **ALL**

# TYPES OF SELECTION

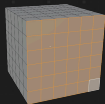
In Edit Mode

## SELECT MORE LOOPS



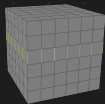
Hotkey: **SHIFT + ALT + LEFT CLICK**  
Function: **SELECT MORE LOOPS**  
Select mode: **ALL**

## SELECT BETWEEN TWO CORNERS



Hotkey: **SHIFT + CTRL + LEFT CLICK**  
Function: **SELECT BETWEEN 2 POINTS**  
Select mode: **ALL**

## SELECT EDGE RING

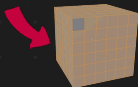


Hotkey: **CTRL + ALT + LEFT CLICK**  
Function: **SELECT EDGES RING**  
Select mode: **EDGE SELECT MODE**

## INVERT SELECTION



Hotkey: **CTRL + I**  
Function: **SELECT EVERYTHING YOU  
DON'T HAVE SELECTED**



Select mode: **ALL**

# TYPES OF SELECTION

In Edit Mode

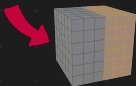
## SELECT MIRROR



Hotkey:  
Function:

**SHIFT + CTRL + M**  
**SELECT MIRROR OF**  
**SELECTED VERTICES**  
**ALL**

Select mode:



# MORE COMING SOON!

I'll create a community post on youtube when the next pdf guide is out.

If you have any suggestions feel free to let me know in the comments of one of my youtube videos, @blenderinferno

